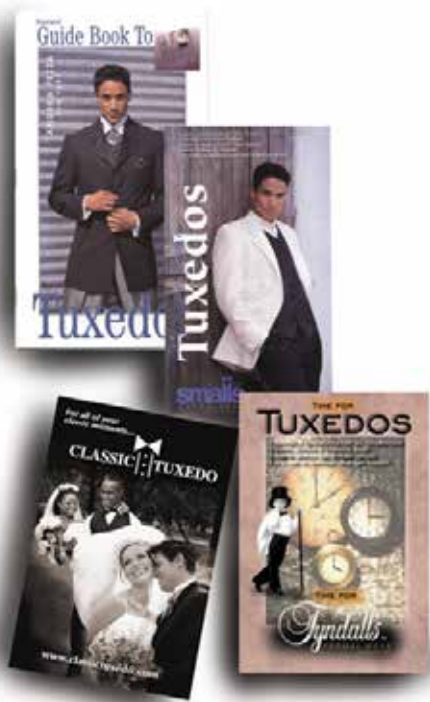


# Brenda Webster

## The Clear Solution



# Catalogs & Brochures

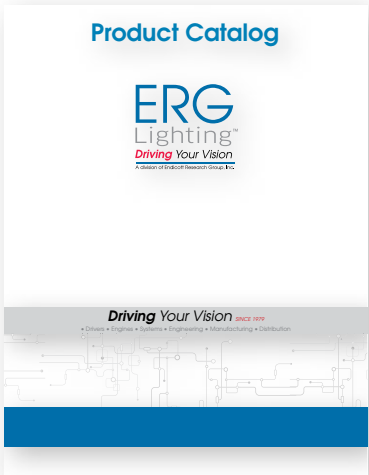
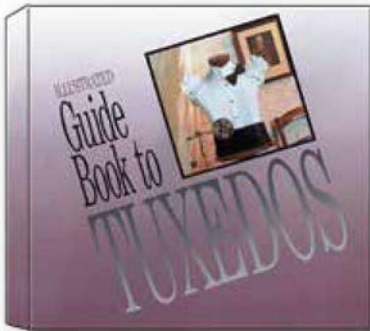


“Since we have distributed the new catalog sales have increased by over 17% and the comments from our customers are very positive.”

— M. Sarno,  
Sarno & Sons Tuxedos, PA

“The Brochure looks fantastic Brenda. The suits really pop. The employees really love it and I am very satisfied. Thanks for all your hard work.”

Rommie —Tyndall's Formalwear, NC



Sell Sheets, Direct Mail, Inserts, Ads

# LED Drivers



**Archilume**

- High quality, flicker-free dimming
- Architectural performance
- Custom form factors available
- Made in USA

**ERG Lighting**  
Driving Your Vision  
A Division of Endress Research Group, Inc.

[www.ERGLighting.com](http://www.ERGLighting.com)

# Why Kaleidoscope Education Solutions

Kaleidoscope Education Solutions is a private referral agency dedicated solely to providing educational and therapy services within the special education departments of public charter and private schools. We have opportunities available ranging from one hour per week to full-time for both in-person and virtual services.

Kaleidoscope Education Solutions is well versed in serving a broad range of educational institutions by sourcing the highest quality school-based professionals.

**Settings:**


- Public Schools
- Cyber Schools
- Charter Schools
- Head Start / Early Intervention Programs
- Intermediate Units / Education Consortia
- After School Program

**Professionals Sourced:**

- Speech Language Pathologists
- Special Education Teachers
- Occupational Therapists
- Physical Therapists
- Psychologists
- Audiologists

We have referred special education providers to approximately 30,000 schools and agencies and have consulted with more than 150 school districts across the country to enhance district efforts in improved delivery of special education and therapy services.

Through our school-based services, professionals collaborate with, teachers, school leaders, and parents to help students with a variety of developmental delays or disabilities achieve success and improve the quality of their lives.



**Kaleidoscope Education Solutions**  
A national network of Private Therapists & Educators

Please Note: Kaleidoscope Education Solutions (KES) is a referral agency. Registering with KES is not a guarantee that job opportunities will be available and/or limited. All professionals contracting through KES are classified and compensated as self-employed independent contractors.

[www.kesgroup.net](http://www.kesgroup.net) | Toll Free: 888-829-2477

# The Daily Tea.com

-YOU USED TO KNOW US AS TEA MAGAZINE-

**TRAVEL**

Send your senses on an international adventure to tea gardens and connect with the history and traditions from root, to leaf, to cup.

**RECIPES**

Welcome tea into your kitchen beyond the kettle and steep, and learn how to layer the leaves into everyday dishes and sips beyond traditional afternoon tea.

**Wellness**

Known as a cure for the mind, body and soul, explore ways in which tea can lift your spirits, boost immunity and create calm in your day.

**News**

Track tea trends and up-to-the-minute news in your neighborhood and around the world, whether it's the launch of a new tea brand, highlights at tea festivals, a steeped health study or how the global tea landscape is changing everyday.

**Inspiration**

Tuck yourself in a favorite nook, any cup and curl up to inspiring stories inspired by tea.






**Q.** What soft skills will be most in demand by employers over the next 12 months and beyond and how lighting organizational charts may change?

**A.** The answer you didn't expect.

"This is going to be an answer that nobody would expect. You have to understand, I'm a bit of a contrarian. The positions that are always in demand are for truly talented and experienced sales and marketing people. Sales professionals who understand what features are and how they truly benefit the end user, the specifier and the agent."

Jay Goodman  
Founder, LumenOptix



... STEEPED IN A SINGLE MOMENT. WHAT MOMENTS WILL YOU SAVOR?  
FIND YOUR INSPIRATION ON [THEAILYTEA.COM](http://THEAILYTEA.COM)

**RES AND BENEFITS**

- Perfect one for one replacement of HID high bay systems in commercial and industrial facilities.
- Fully enclosed aluminum body allows for maximum durability
- Additional venting slots and vented ballast channel for optimal thermal management
- Optimal thermal management increases fixture efficiency
- Made in USA (AIAA and Buy American Act compliant)

**SPECIFICATIONS**

**MECHANICAL**

**Housing:** Body is formed of aluminum with a white powder coat finish for maximum durability. In addition, the unit comes with rotary lock lamp holders to ensure lamps are secure once installed.

**Optics:** Enhanced specular aluminum reflector with a wide beam distribution (1.2-2.5°). Ideal for open area, lower mounting heights, and applications that need wide coverage.

**ELECTRICAL**

**Ballast:** Electronic programmed rapid start ballast come standard which provides instant on in event of power outage. Ballast disconnect is standard.

**INSTALLATION**

Suitable for suspension by chain, cable, hook, monopoint or single monopoint. Surface mounting not recommended. To maintain optimal performance, fixture should be mounted at a minimum plenum height of 8".

**WARRANTY**

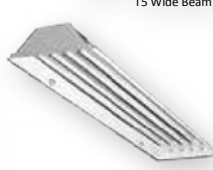
1 year limited warranty on luminaires. Pass through warranties on components when used in accordance with manufacturing guidelines. See [www.lumenoptix.com](http://www.lumenoptix.com) for details.

**LABELS & LISTINGS**

Buy American & AIAA compliant, UL Listed

**CE** **UL** **LISTED**

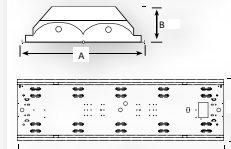
**FM**  
Fluorescent | Industrial High Bay  
Full Body  
Max Air Flow Series  
T5 Wide Beam



**FIXTURE EFFICIENCY**

4 LAMPS	CONSULT FACTORY
Total luminaire efficiency varies by model. For full T5 fixture contact us at <a href="mailto:sales@lumenoptix.com">sales@lumenoptix.com</a>	

**DIMENSIONS & FIXTURE CONFIGURATIONS**



NUMBER OF LAMPS	WIDTH (IN)	HEIGHT (IN)	LENGTH (IN)
4	14.180"	4.250"	18.000"

## Trade Shows, POP displays, Banners, PowerPoint

## All Modules Are Not the Same... It Takes years of **Real World Experience**

presented by Derek Smith, Vice President of Sales and Marketing, Motech America

### Module Assembly Operation

	Quality Control
1. <b>Stringing</b>	Stringing Machine Settings
2. <b>Wiring</b>	Wiring Diagrams
3. <b>Interconnect</b>	Interconnect Placement
4. <b>Final Lay Up</b>	Final Lay Up Inspection
5. <b>Lamination</b>	Lamination Temperature
6. <b>Backsheet</b>	Backsheet Placement
7. <b>Power Test</b>	Power Test Settings
8. <b>Fluxing</b>	Fluxing Machine Settings
9. <b>Alloy</b>	Alloy Placement
10. <b>Final Test</b>	Final Test Settings
11. <b>Clean</b>	Clean Machine Settings
12. <b>Packaging</b>	Packaging Machine Settings

### Materials Can Pass Certification... but Fail in the Environment

**A Module is Only as Strong as its Weakest Link**

To Understand Drivers of System Lifetime & Performance, We Must Understand Failure Modes

Cells	Encapsulant	Backsheet	Tabbing	Adhesive	InterConnect	Frame	J-Box	Wire
								
Cell Cracks	Encapsulant Cracks	Backsheet Cracks	Tabbing Cracks	Adhesive Cracks	InterConnect Cracks	Frame Cracks	J-Box Cracks	Wire Cracks
Cell Edge Cracks	Encapsulant Edge Cracks	Backsheet Edge Cracks	Tabbing Edge Cracks	Adhesive Edge Cracks	InterConnect Edge Cracks	Frame Edge Cracks	J-Box Edge Cracks	Wire Edge Cracks
Cell Surface Cracks	Encapsulant Surface Cracks	Backsheet Surface Cracks	Tabbing Surface Cracks	Adhesive Surface Cracks	InterConnect Surface Cracks	Frame Surface Cracks	J-Box Surface Cracks	Wire Surface Cracks
Cell Bottom Cracks	Encapsulant Bottom Cracks	Backsheet Bottom Cracks	Tabbing Bottom Cracks	Adhesive Bottom Cracks	InterConnect Bottom Cracks	Frame Bottom Cracks	J-Box Bottom Cracks	Wire Bottom Cracks

### Imported Module vs. JPL Compliant Module

**Visual Inspection**

**Power Loss**

**Short Circuit Current Testing**

**15% DEGRADATION RATE over 12 years**

**9% DEGRADATION RATE over 12 years**

**Difference in Degradation Rates Would Result in a 6.7% Difference in Revenue**

## QUALITY AND RELIABILITY



Booth# 3511

**THE COMPANY**

## Milestones

- 2010** MOTECH acquires GE Energy's solar module operation in Delaware, creating **MOTEC AMERICAS LLC**
- 2008** **GE Solar** takes a place in the **DGE Solar America Initiative**
- 2006** Private label **GE Brilliance** inverter
- 2005** MOTECH becomes the sole supplier of solar cells to the GE facility
- 2005** Launch of the **GE Brilliance** systems supply for residential customers
- 2004** GE invests in the **Advance Module Technology** program
- 2004** GE Energy acquires the **AstroPower** module operation in Delaware
- 2003** First successful new home builder program
- 2002** **MOOCO** Program implemented for in country module manufacturing
- 2002** **Home Depot** program
- 2001** **House Meter** program
- 2001** Launch of the first residential system level supply called **SunChoice**
- 2000** Introduction of the first roof integrated residential module
- 1998** **Silicon Film** process launched for wafer casting
- 1991** American solar cell and module manufacturer **AstroPower** formed in Newark, Delaware.\*

Before Tabletop displays

ERG

ERG

ERG

Discover the ERG difference

Create graphics to show visual dimming difference

ERG 100% as CIE, D65, 2 degree to 10  
Illuminant 100% to 100% made in USA  
Copyright 100% (Other) 100% (Other) 100%  
as 100% to drop off at 100%

Suggested Tabletop display

**Evaluation of Various Drug-Layering Substrates for Extended Release Tablets**

**Authors:** Dana Moserion, dmoserion@emersoninc.com  
 Stephen P. Levine

**Tablet Structure:** A schematic diagram of a tablet showing a central **Core** surrounded by a **Coated Beads** layer, with a **Coating Process** indicated.

**PURPOSE**

To evaluate suitability of various drug-layering substrates for controlled release delivery in tablets. This work attempts to determine the critical factors to optimize, in order to as to minimize the damage to the film coating during compression. Materials are more prone to cracking and therefore drug dumping if the core is too weak, i.e. microcrystalline cellulose, and layer spiness were evaluated.

**METHODS**

**Coating Process:** Coated Beads, MCC and Cores were prepared by the following process: 1000 beads were coated with 100 mg of MCC, 100 mg of Cores were coated with 100 mg of MCC. The coated beads were dried at 200°C for 2 hours.

**Pre-Production:** 1000 beads were coated with 100 mg of MCC, 100 mg of Cores were coated with 100 mg of MCC. The coated beads were dried at 200°C for 2 hours.

**Crushing Process:** 1000 beads were coated with 100 mg of MCC, 100 mg of Cores were coated with 100 mg of MCC. The coated beads were dried at 200°C for 2 hours.

**Crushing Strength:** A bar chart showing the crushing strength (Force in g) for Coated Beads, MCC, and Cores. Coated Beads show the highest crushing strength, followed by MCC, and then Cores.

**Finitility:** A bar chart showing the finitility (Force in g) for Coated Beads, MCC, and Cores. Coated Beads show the highest finitility, followed by MCC, and then Cores.

**Robustness:** A bar chart showing the robustness (Force in g) for Coated Beads, MCC, and Cores. Coated Beads show the highest robustness, followed by MCC, and then Cores.

**RESULTS**

Coating MCC beads requires an additional step in order to allow the drug to pass through the beads. Beads, which are composed of 100% pure MCC, in a single step process, are not suitable for extended release tablets. Beads, which are composed of 100% pure MCC, in a single step process, are not suitable for extended release tablets.

**CONCLUSIONS**

All three types of core materials were successfully coated. While all three prototypes had the same coating process, they had different results. The MCC beads were the most difficult to coat, followed by the Cores, and then the Coated Beads. The Coated Beads were the most suitable for extended release tablets.

The photograph shows a trade show booth for ERG Lighting. The booth is set up with a curved wall that has a blue and white design. A large recycling symbol is prominently displayed on the wall. Several informational panels are mounted on stands, and a person is visible on the left side of the booth.



**Kaleidoscope**  
Education Solutions

**Providing Exceptional  
Therapists & Teachers  
with Outstanding  
Opportunities...**

*"It is amazing working with  
Kaleidoscope. Everyone is very  
helpful and responds immediately."*

*"I like the support that  
I have gotten from  
Kaleidoscope and the ease of  
the billing procedure."*

**IMPOSSIBLE**

**Kaleidoscope Helps Provide:**

- Positive student outcomes
- Professional success
- Ideal school environment

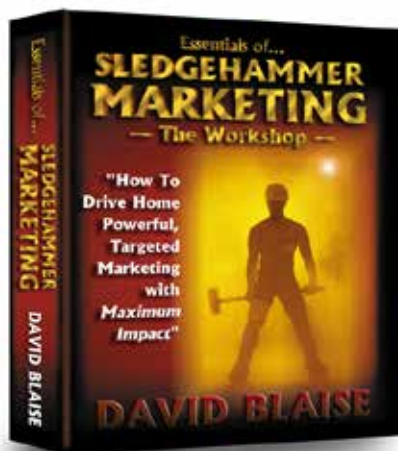
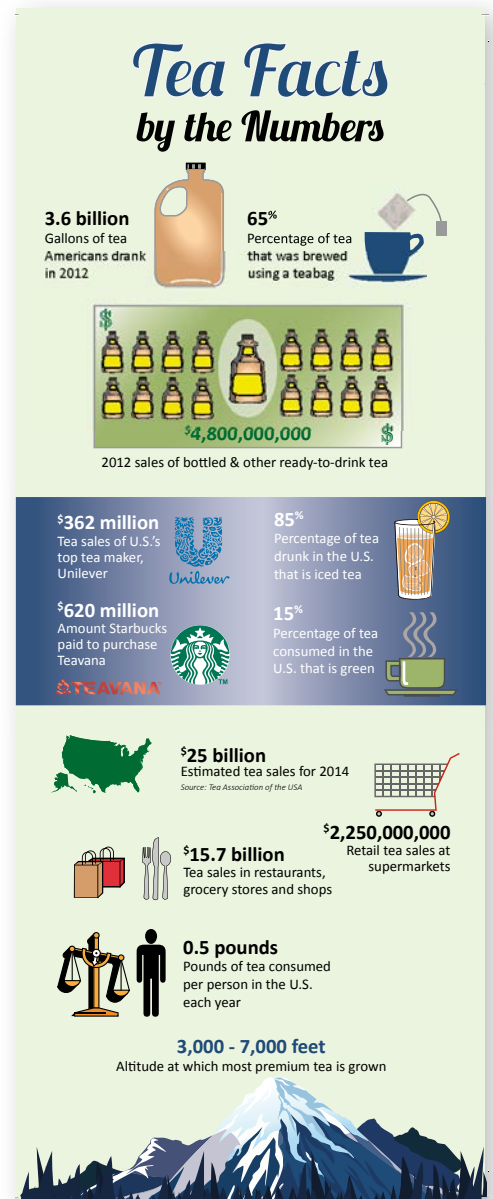
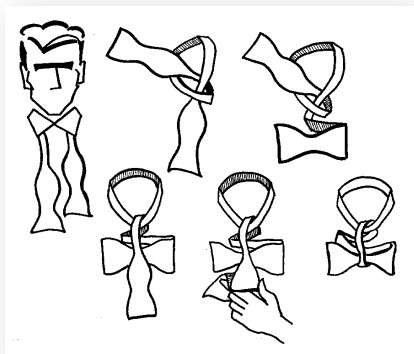
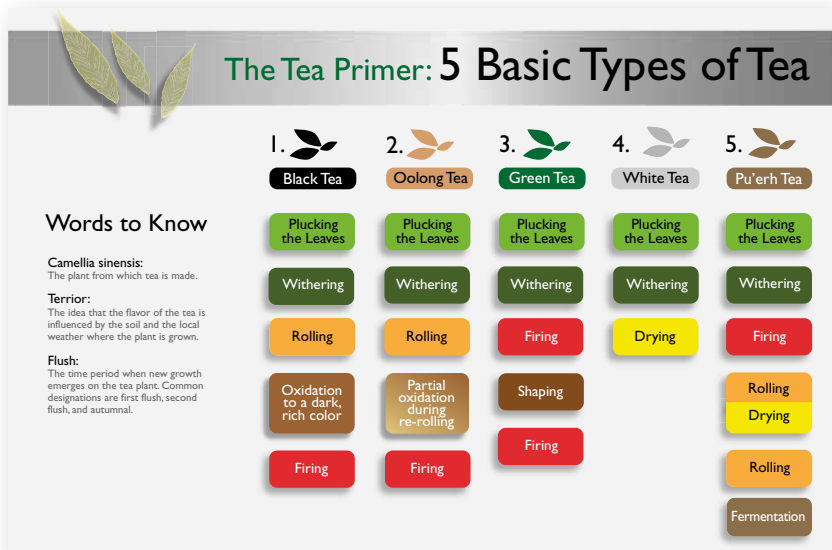
**kesgroup.net**  
**1-800-908-0546**



# Photography Shoots, Art Direction, Styling, Talent & Crew



# Infographics, Line Art, Packaging, Other



“Brenda is brilliant: Creative, focused, detail-oriented and professional. She’s one of the few graphic designers I’ve ever worked with who truly understands marketing and the key concept that the goal of a great design is to better position the product and advance the selling process.

In addition to all that, Brenda is just fun to be around. She is smart and witty and funny and exceptionally great at what she does. If you operate in a competitive market, hire her before your competition does. Whoever has Brenda in their corner wins!!”

— D. Blaise, Blaise Drake & Company, Inc.

# Website & Digital Design



Callahan Brothers Moving & Storage rebranded in WordPress to match parent company Joyce Van Lines.

**The PROFESSIONALS**  
**Joyce**  
**JOYCE VAN LINES, INC.**

**MOVING & STORAGE**  
**Callahan**  
**Brothers**

Rebranded into Magento Ecommerce

“Brenda manages my companies website as well as other marketing projects. She is very easy to work with and offers website solutions that are often the better way to go than what was thought. What I like best about working with Brenda is that she does more than what is expected. She makes our website more functional and user friendly because she cares, she wants it to be great!”

— D. Early, LumenOptix

